

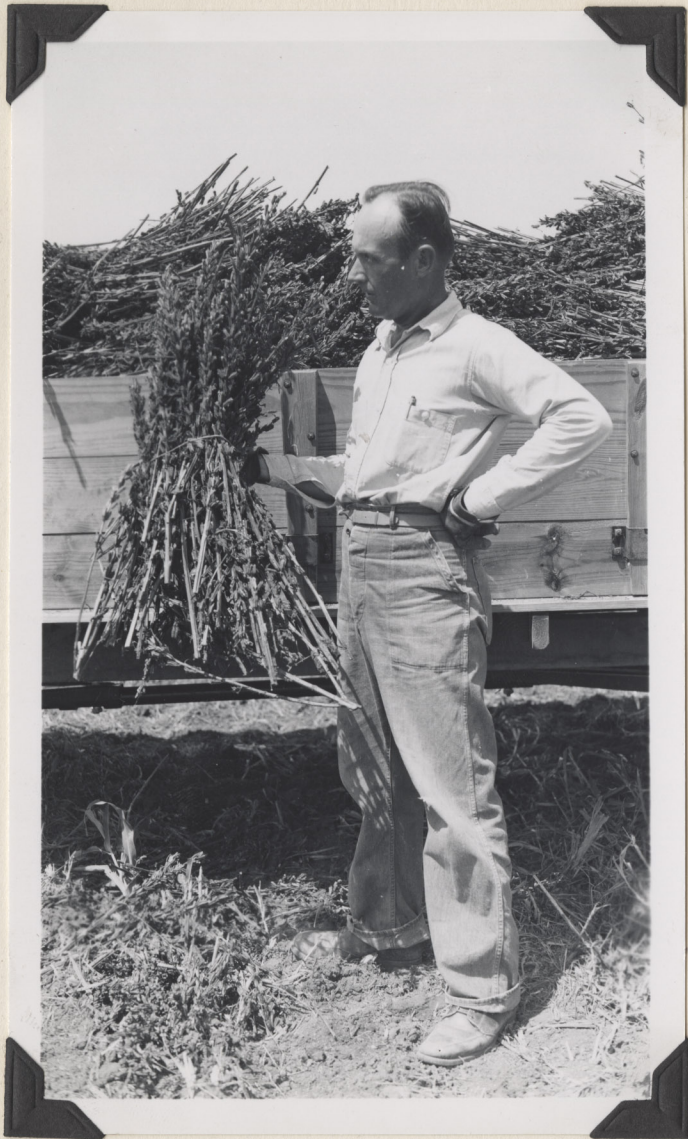


Kermit Hees, Pflugerville 4-H member, shows Asst. County Agent Lynn M. Griffin, some of the milo heads he produced in 1953 in competition with 17 other 4-H boys of the county.

2208



Sixteen 4-H boys grew 75 acres of grain crops in the fifth annual contest sponsored by A. J. Maloney, International Harvester dealer of Austin. William Weiss shows Walter Nelson, the sponsor's representative, his field of Redbine 66. An annual tour has been made of the crops.



Robert Avant, Pflugerville farmer, tried a small
acreage of sesame in 1953.

8028



Arthur Swenson, Kimbro farmer and Travis County Commissioner, harvested 75 bales from 200 acres of cotton, mechanically, at a cost of \$13.06 per bale. Hand labor cost \$38.50 or more per bale. The machine harvested cotton graded at least as high as the hand pulled.



David Gault demonstrates effect of 40 pounds of nitrogen per acre on speltz. Right had 50 pounds of anhydrous ammonia applied, left had no fertilizer.



The use of anhydrous ammonia as a source of nitrogen fertilizer on pasture, hay and grain crops was demonstrated to one hundred dairy and livestock farmers of Travis County at a field day in January. Twenty five farmers used nitrogen fertilizers on 2,500 acres for the first time in 1953.

8008



More than 300 Travis County soil samples have been tested by the A and M Soils Laboratory. Vernon Scofield, Shorthorn breeder of Austin, shows how he collects a soil sample.



Plaques were presented exhibitors of the three best dozen eggs at the Travis County egg show and poultry short course on September 18. Dr. F. Z. Beanblossom, who judged the eggs is holding the best dozen; the winners are holding their plaques and Jim N. Boswell of the Austin Chamber of Commerce poultry committee, right has just presented the plaques.



Bernard Jacob, Durco swine breeder of Austin, built this hog breeding crate from plans provided through the County Agent. He provides a boar for breeding gilts for 4-H members in the county. Often the gilts are too small to be serviced by a large boar, unless a breeding crate is available.

2208



During September, October and November Travis County's State Champion 4-H Livestock Judging team practiced judging with the A and M College senior team. This class of lambs was judged at A and M on Saturday, October 24.



Junior sheep breeders of Travis County have made progress. This class of registered Rambouillet ewe lambs was shown at the Austin Livestock Show last March by 4-H and FFA exhibitors.

8032



Glen Murchison, president of the Pflugerville 4-H Club, has his own herd of registered and grade dairy cattle. Here are two of his registered Jersey females on which he has kept production records for two years and his Jersey herd bull, which was presented to him by Herman Heep of Austin. Glen has won much recognition with his dairy accomplishments and as a member of the State 4-H Livestock Judging Team.

8023